



CERTIFICATE OF ANALYSIS

20 Martin Ross Avenue, North York, ON, M3J 2K8, CANADA
Tel: (416) 665-9696, Fax: (416) 665-4439
Email: orders.trc@lgcgroup.com Website: www.trc-canada.com

1. Identification

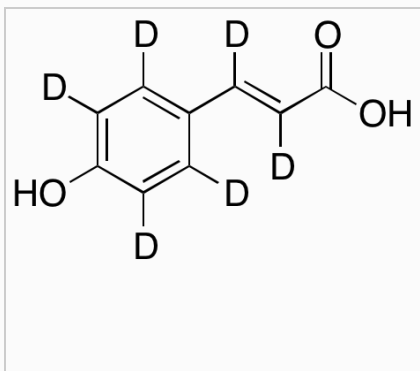
Catalogue Number: C755392

CAS Number: NA

Product: trans-p-Coumaric-d6 Acid

Synonym: (2E)-(4-Hydroxyphenyl)-2-coumaric-d6 Acid; (2E)-(4-Hydroxyphenyl)-2-propenoic-d6 Acid; (E)-3-(4-Hydroxyphenyl)-2-propenoic-d6 Acid; (E)-3-(4-Hydroxyphenyl)acrylic-d6 Acid; (E)-4-Hydroxycinnamic-d6 Acid; (E)-p-Coumaric-d6 Acid; (E)-p-Hydroxycinnamic-d6 Acid; Naringenin-d6 Acid; p-Hydroxy-trans-cinnamic-d6 Acid; p-trans-Coumaric-d6 Acid; trans-3-(4-Hydroxyphenyl)-2-propenoic-d6 Acid; trans-4-Coumaric-d6 Acid; trans-4-Hydroxycinnamic-d6 Acid; trans-p-Coumaric-d6 Acid; trans-p-Coumarinic-d6 Acid;

Structure:



Molecular Formula:

C₉H₂D₆O₃

Molecular weight:

170.19

Source of Product:

N/A

Solubility:

Acetone (Slightly), Methanol (Slightly)

Lot Number: 5-SCZ-178-1

Purity: 96%

Shipping Condition: This Product Is Stable To Be Shipped At Room Temperature

Storage Condition: 4°C

2. Warning

Warning 1:

Warning 2:

Warning 3:

3. Analytical Information

Tests:	Specifications:	Results:
Appearance	White to Off-White Solid	White to Off-White Solid
NMR	Conforms to Structure	Conforms
HPLC Purity	Report Result	98.77% (310 nm)
MS	Conforms to Structure	Conforms
Isotopic Purity	>95%	98.9%

Additional Information:

Normalized Intensity: d0 = 0.00%, d1 = 0.05%, d2 = 0.07%, d3 = 0.02%, d4 = 0.12%, d5 = 6.01%, d6 = 93.73%

Purity is based on the analytical results of the tests performed. NMR and Elemental Analysis (if available) may have an accuracy of ± 2%. Isotopic purity is based on mass distribution observed. The contents of the specifications are subject to change without advance notice, and the specification values displayed here are the most up to date values.

4. Signatures

Reviewed By

Henry Tieu



Reviewed By

Toni Rantanen



**C of A Approved
By**

Chanell Chu



Test Date

10/11/2022

Retest Date

10/9/2026